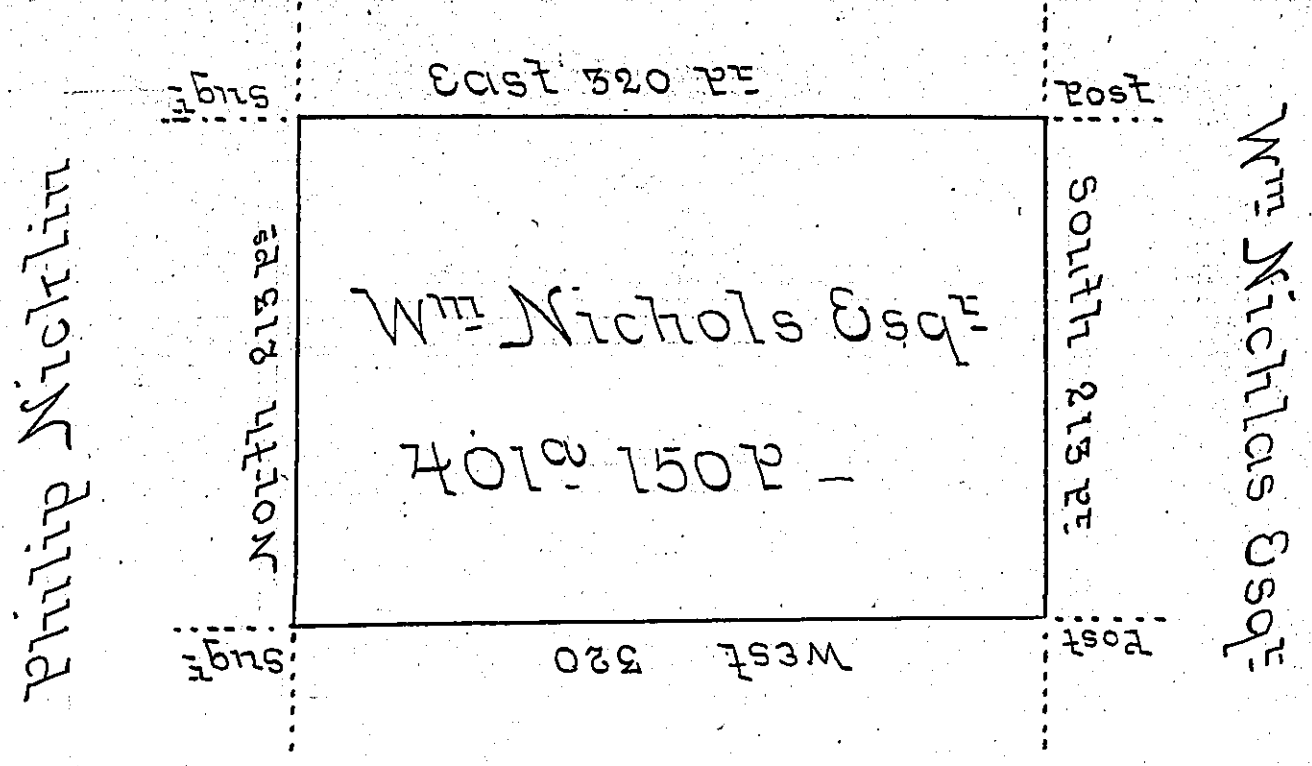


James O'Leary



John W Nesbitt

Situate on the West side of French Creek in Allegheny County containing 401 Acres & 150 p & Allowance of six per Cent for Roads &c Surveyed the 4<sup>th</sup> day of June 1795 In pursuance of a Warrant dated the 30<sup>th</sup> day of May 1792

Wm Power D.H. SE

Mo Don't Broadhead Esq  
 Surveyor General

IN TESTIMONY that the above is a copy of the original remaining on file in the Department of Internal Affairs of Pennsylvania, made conformably to an Act of Assembly approved the 16th day of February, 1833, I have hereunto set my Hand and caused the Seal of said Department to be affixed at Harrisburg, this ninth day of June 1906.

*Loac R. ...*  
 Secretary of Internal Affairs.